



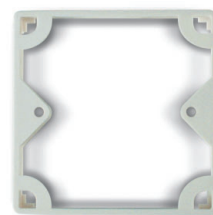
Cover frame 1- port



Cover frame 2 port



Surface mounted box  
for data outlet



Spacer frame for  
surface mounted box

## Product information

### Application

#### Cover frame

The cover frames can be used for data outlet CS, ECS, MS and PS.

### Application

#### Surface mounted box for unilan® data outlet

For the surface mounting of unilan® data outlets (copper and fibre optic).  
The surface mounting box (80x80mm) comprises a frame and cover plate (H=40mm).

The spacer frame can be used to increase the overall height from 40 to 50mm.

Article No.	Description	Colour	PU
1401 630	cover frame 1-port 80x80x5mm	RAL 1013	1 piece
1400 830	cover frame 1-port 80x80x5mm	RAL 9010	1 piece
1403 700	cover frame 2-port	RAL 1013	1 piece
1403 924	cover frame 2-port	RAL 9010	1 piece
1406 274	Surface mounting box 40mm including cover plate	RAL 1013	1 Piece
1406 276	Spacer frame 10mm for surface mounting box	RAL 1013	1 Piece
1406 273	Surface mounting box 40mm including cover plate	RAL 9010	1 Piece
1406 275	Spacer frame 10mm for surface mounting box	RAL 9010	1 Piece